



NAS 3



Datto NAS is a smart, scalable network attached storage platform, centrally managed and protected by the secure Datto cloud. Easily share files and folders on the local network and replicate NAS snapshots to the Datto Cloud without any additional infrastructure investment. Store more locally, secure it, and back it up to the cloud forever with block level deduplication and Infinite Cloud Retention. Datto NAS 3 scales from 500GB – 120TB.

Datto NAS features Inverse Chain Technology, which ensures fast, flexible restores and efficient cloud storage for each backup. Built to Datto's exacting standards, devices are easy to install now and expand later. Datto NAS provides local primary storage for easy file sharing, and cloud-based snapshots can be used to restore lost devices. This means that, if there is a loss of data, a backup copy is available for days, months or years. Whether you've lost a file or an entire volume, Datto NAS gets your business files back, fast.

Ransomware Protection

Ransomware is not just a problem for endpoint systems; it will also affect all data stored on a network. This is why NAS 3 with NAS Guard can now mount other network storage devices and automatically schedule and copy data to NAS 3. Once under the NAS Guard umbrella, this data is then protected just like any other data, uploaded to the secure Datto Cloud, and available for restore at any time. Protect your existing network storage solutions from ransomware attacks with NAS Guard.

File Sharing

In today's business environment, sharing files among employees is table stakes. With Datto NAS, files are stored and available on the network in the protocol of choice, providing a single storage location accessible across operating systems. Need to collaborate on files together, then create a shared folder and work. Need to restrict users to read only, then set ACLs on those folders. Need Windows, Mac and Linux users working together, then enable those protocols. Backup files from workstations and build business processes around Datto NAS.

All in One Protection

Once all of your data is stored on a single device, there is now a single point of failure. While losing a drive is recoverable, losing many drives, the device, or the building is not easily recoverable. Datto provides a single, fully integrated cloud protection layer

in every device to protect from even the worst disasters. Simply configure the device snapshot schedule, run the first snapshot, and the data is protected in the secure Datto Cloud.

Secure File Sync and Share

More than making files available in a drive on the local network, making the latest files available on any device, at any time makes business possible. This is why Datto NAS supports Datto Drive local. Based on the same technology behind Datto Drive, simply click a button to install Datto Drive on the device. Configure Datto Drive Local and access files from the office, mobile devices, desktop sync clients, and the web.



NAS 3

The Cloud Protected Network Storage Platform

Hybrid Cloud

Protect any data stored on the local NAS with the secure Datto Cloud. Work from the local device and schedule regular snapshots for protecting data. Send those snapshots to join more than 250 PB of customer information already stored in the secure Datto Cloud. In case of disaster, mistake, or other forms of lost data, restore files and complete NAS images from the cloud.

One Integrated Product

As a fully protected storage device, Datto NAS includes the three major components: network addressable storage, local fault tolerance, and cloud backup storage and recovery. Datto NAS is a single, integrated platform providing all of these functions out of the box in a single, easy to use and centrally manage package. Simply configure the device and use it, and data will be protected.

New Hardware

Datto NAS ships with entirely new hardware. From stand-alone all flash devices to rack-mounted 4U chassis, simply plug in and start protecting files immediately.

NAS Guard

Not all network storage is protected by the cloud. This is why Datto NAS 3 can mount other network storage locations and automatically schedule and copy data from other devices to the Datto NAS. This will provide an efficient, replicable backup of a network share, performing local incrementals. Then, scheduled replication to the Datto Cloud provides backup job management and long term retention.

Infinite Cloud Retention

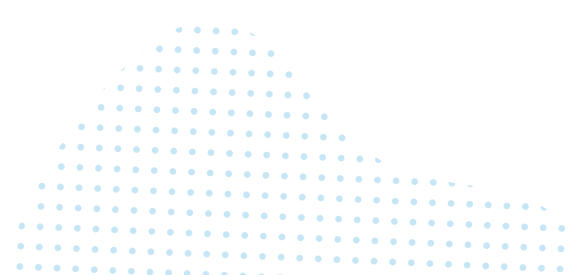
The most difficult challenge regarding cloud protection of data is selecting which data to protect. Datto NAS solves this problem by introducing an unlimited cloud storage plan. No more deciding what to protect and what not to protect, simply protect it all because when disaster strikes, you never know which files you will need.

Value

	Value		Business		
Model	DN-3A2000	DN3-B500	DN3-B1000	DN3-B2000	DN3-B3000
Capacity	2TB	500GB	1TB	2TB	3TB
CPU	Intel Celeron 3865U			Intel Xeon D 1521	
RAM	8 GB DDR4			32 GB DDR3	
Array	-	2 x 500GB (RAID1)	2 x 1TB (RAID1)	2 x 2TB (RAID1)	2 x 4TB (RAID1)
NICs	1 x 1GbE			2 x 1GbE	
OS Drive	-			240GB SSD	
Transfer	1TB			N/A	
Chassis	Mini Desktop			Desktop	
Output Power	560 W			250 W	
Input Voltage	120-240V			120-240 V	

Professional

	Professional				
Model	DN3-P1000	DN3-P2000	DN3-P4000	DN3-P6000	DN3-P10000
Capacity	1TB	2TB	4TB	6TB	10TB
CPU				Intel Xeon D 1541	
RAM	32 GB	32 GB	48 GB	48 GB	48 GB
Array	2 x 1TB (RAID 1)	2 x 2TB (RAID 1)	2 x 4TB (RAID 1)	2 x 6TB (RAID 1)	3 x 6TB (RAID 5)
NICs				2 x 10GbE	
OS Drive				240GB SSD	
Transfer				1TB	
Chassis				1U	
Output Power				560 W	
Input Voltage				120-240V	



Enterprise

Model	DN3-E6000	DN3-E12000	DN3-E18000	DN3-E24000	DN3-E36000	DN3-E48000	DN3-E60000	DN3-E80000	DN3-E100000	DN3-E120000
Capacity	6TB	12TB	18TB	24TB	36TB	48TB	60TB	80TB	100TB	120TB
CPU	2x Xeon E5-2620 V4	2x Xeon E5-2620 V4	2x Xeon E5-2630 V4	2x Xeon E5-2630 V4	2x Xeon E5-2650 V4	2x Xeon E5-2650 V4	2x Xeon E5-2660 V4	2x Xeon E5-2695 V4	2x Xeon E5-2695 V4	2x Xeon E5-2695 V4
RAM	64 GB	64 GB	64 GB	64 GB	96 GB	128 GB	256 GB	512 GB	512 GB	512 GB
Array	6 x 2TB's (RAID 6)	6 x 4TB's (RAID 6)	6 x 6TB's (RAID 6)	7 x 6TB's (RAID 6)	9 x 6TB's (RAID 6)	12 x 6TB's (RAID 6)	13 x 6TB's (RAID 6)	19 x 6TB's (RAID 6)	23 x 6TB's (RAID 6)	27 x 6TB's (RAID 6)
NICs	2 x 10GbE						2 x 10GbE			
OS Drive ¹	240GB SSD						240GB SSD			
Transfer Drive	1TB						1TB	4TB	4TB	4TB
Chassis	2U						4U			
Output Power	2 x 800 W						2 x 1400 W			
Input Voltage	120 -240 V						120 -240 V			

Datto Drive local

Datto offers a feature rich enterprise file sync and share utility locally on the NAS. Users can access files using desktop or mobile clients and synchronize changes to keep files up to date, all while storing files in their local infrastructure rather than relying on a public cloud.

AD-Integrated User and Share Management

Create network drives in the control panel, add users, and then assign users to each share drive. Set permissions, public and private shares and manage admin access. Import users from Active Directory, and set group memberships, all from the configuration menus.

Cloud File Restore

No matter what, someone eventually makes a mistake and deletes something they need. With cloud based file restore, access files from NAS cloud snapshots and provide them to end users to rapidly recover from accidents, and get users back to work.



NAS 3X

Flash Powered Network Storage

Built for Quality

Datto NAS is designed and assembled in our build facilities by our highly trained team. Built from the best components available, Datto NAS is assembled to our exacting standards with extreme attention to detail. From the design and testing of custom cooling fan blades, to the alignment of cable ties, our attention to detail translates into saved money and time for you, whether in operation or when upgrading and replacing parts.

Flash Business

Model	DN-3X1	DN-3X2	DN-3X4
Capacity	1TB - Flash	2TB - Flash	4TB - Flash
CPU	Intel Core	Intel Core	Intel Core
RAM	16 GB (DDR3)	16 GB (DDR3)	32 GB (DDR3)
RAID		—	
NICs		2 x 1GbE	
OS Drive		—	
Chassis		Mini Desktop	

Flash Professional

Model	DN-3XP4	DN-3XP8	DN-3XP12
Capacity	4TB - Flash	8TB - Flash	12TB - Flash
CPU		Intel Xeon D-1541	
RAM	48GB (DDR4)	48GB (DDR4)	64GB (DDR4)
RAID		RAID 5	
NICs		2 x 10GbE	
OS Drive		240GB SSD	
Chassis		1U	

For more information please contact:

Angelo Vitale | President/Founder

Phone: 727-809-2009

5600 W. Littleton Ave. Suite 100 Littleton, CO 80120